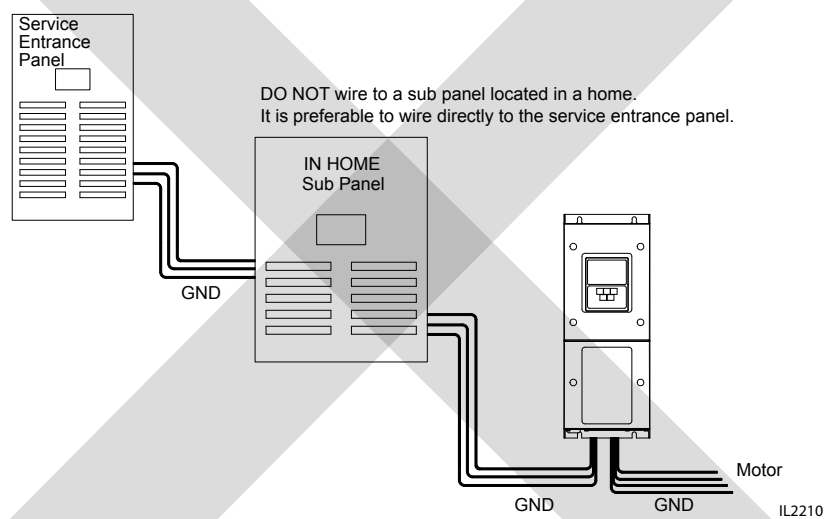
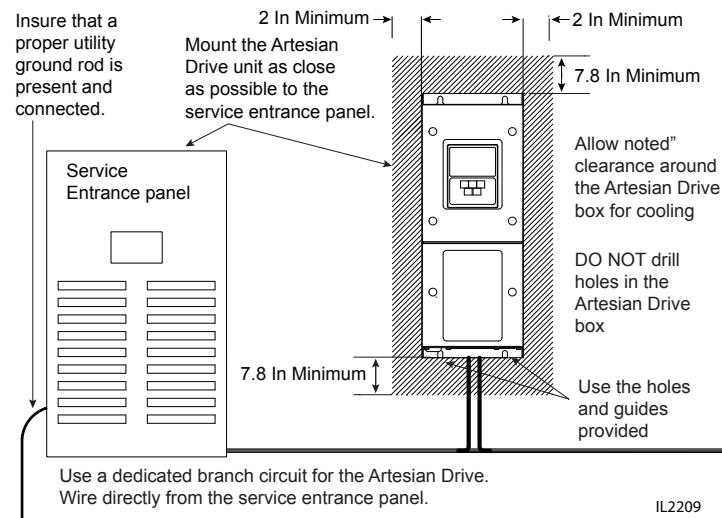
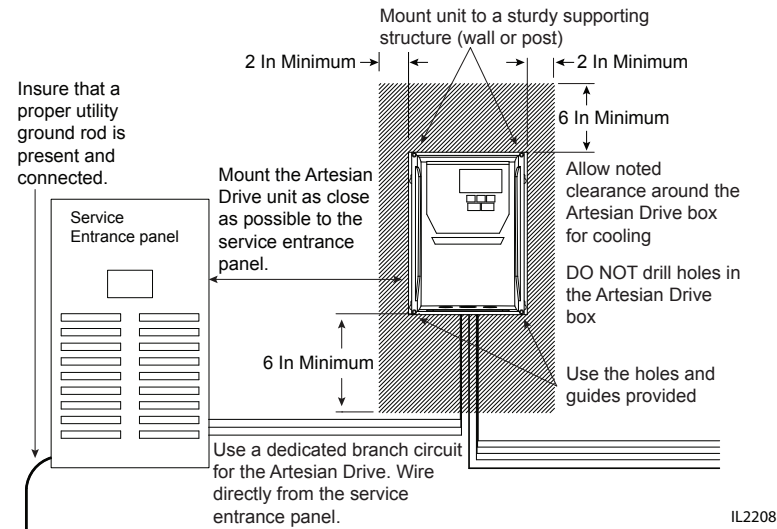
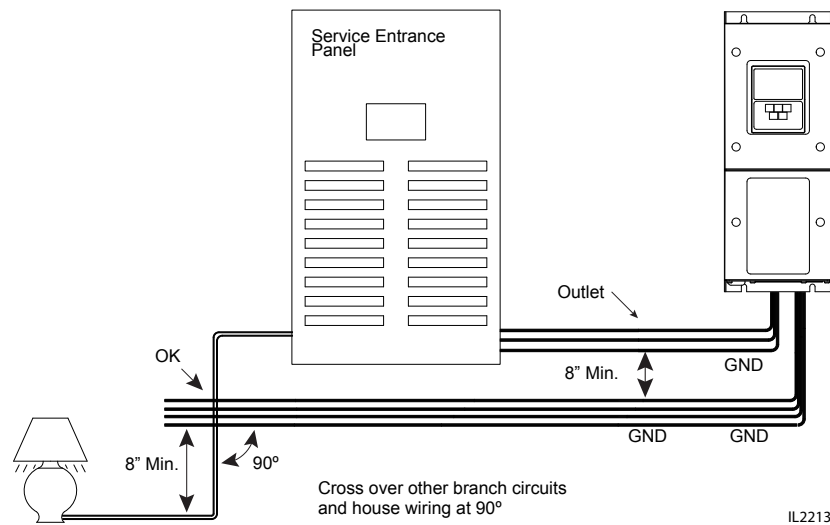
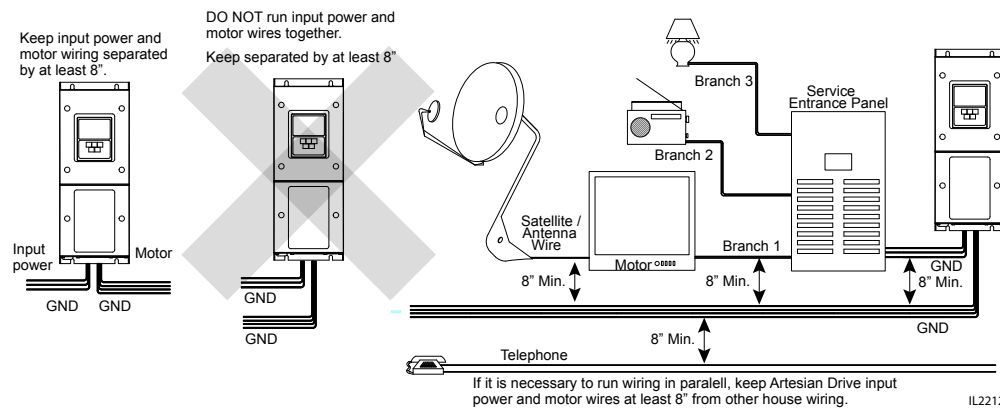
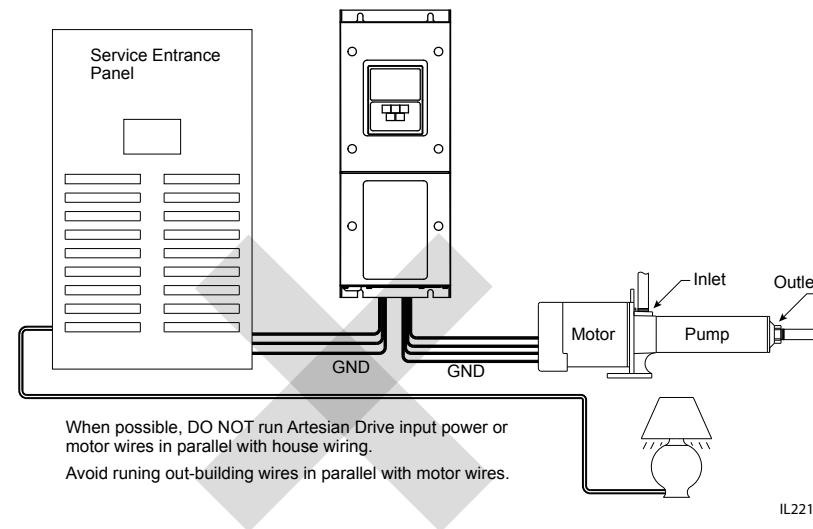


# Artesian Drive® Centrifugal Constant Pressure Installation Guide

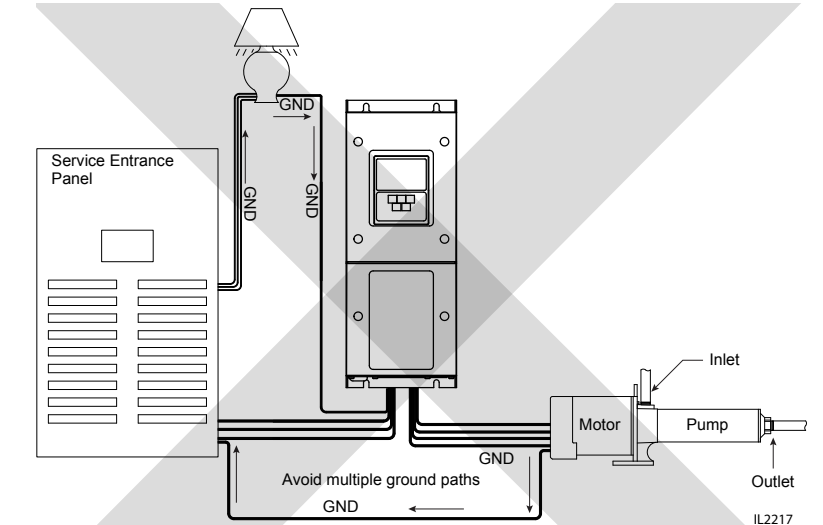
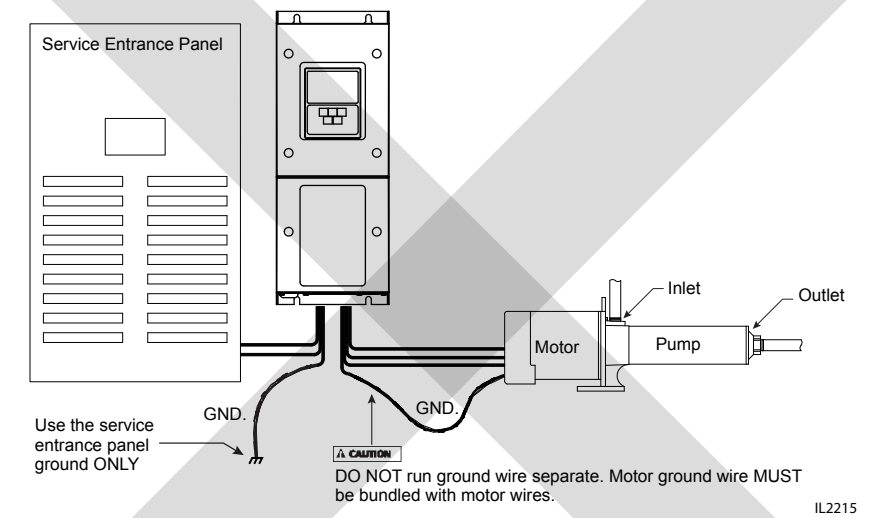
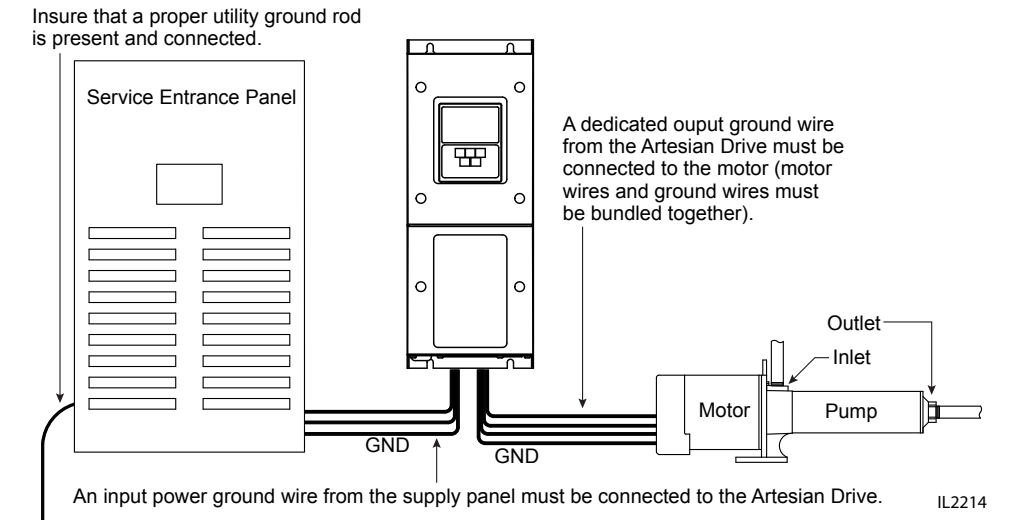
## 1. LOCATION



## 2. WIRE ROUTING



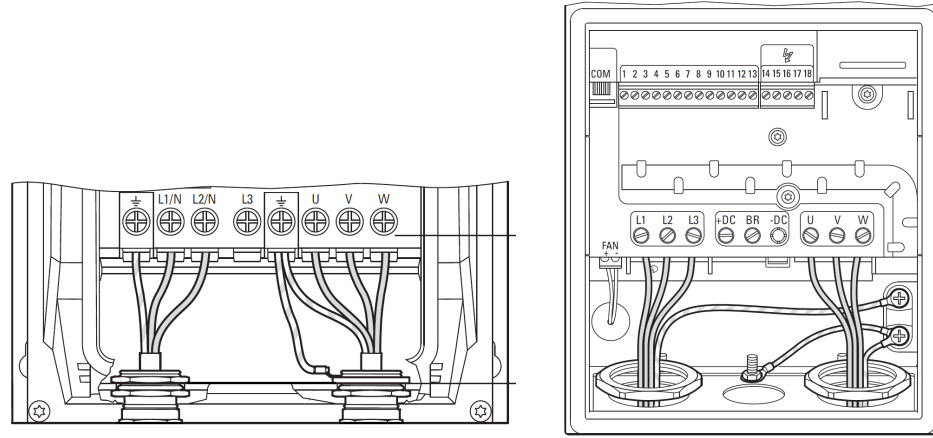
## 3. GROUNDING



# 4. WIRING

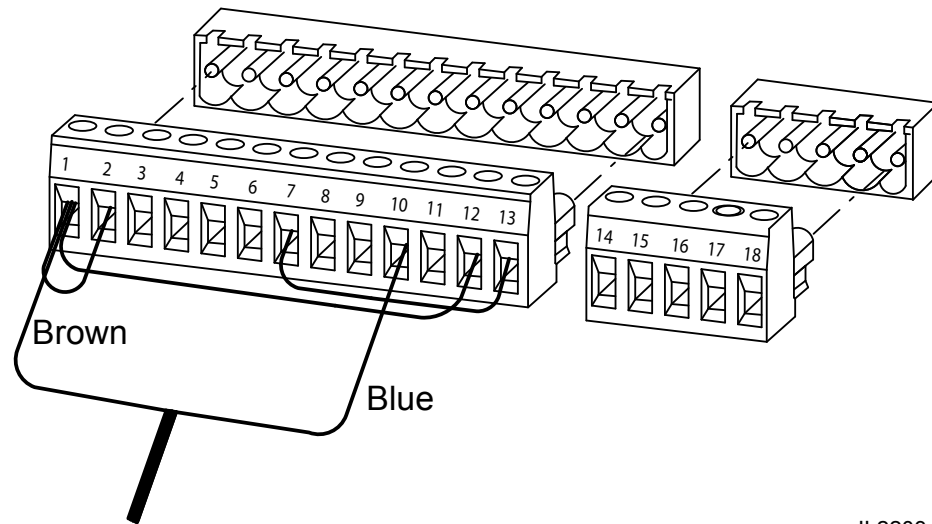
## POWER AND MOTOR LEADS

Connect motor supply leads to terminals U, V & W. Connect power leads to terminals L1 & L2 for single phase input, or terminals L1, L2 & L3 for three phase input drives. For correct rotation on submersible motors the drop cable should be wired, the Red (terminal U), Black (terminal V) & Yellow (terminal W).



## TRANSDUCER LEADS

Connect the pressure transducer brown wire to terminal 1 and blue wire to terminal 10.



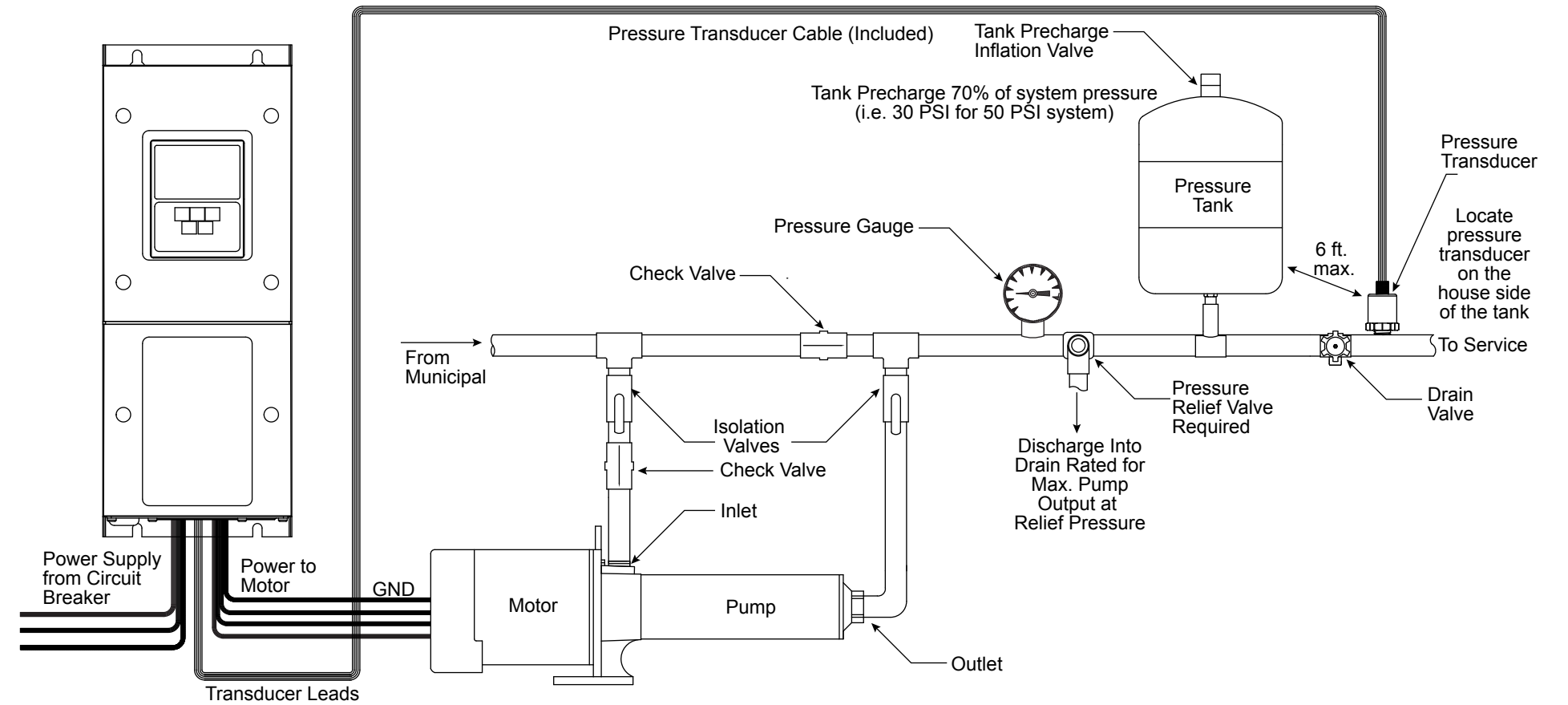
IL2203

# 5. PLUMBING

## MINIMUM PRESSURE TANK

Rated Pump Flow	Pressure Tank Size (Total Volume)
Pump Capacity less than 12 GPM	4 Gallon (AT15)
Pump Capacity greater than 12 but less than 25 GPM	8 Gallon (AT25)
Pump Capacity greater than 25 GPM	14 Gallon (AT44)

The pressure tank pre-charge setting should be 70% of the system pressure sensor setting.



**Tech Support  
Toll Free Help Line  
1-800-742-5044**

