

BOOSTER PUMP

DO'S and DON'TS



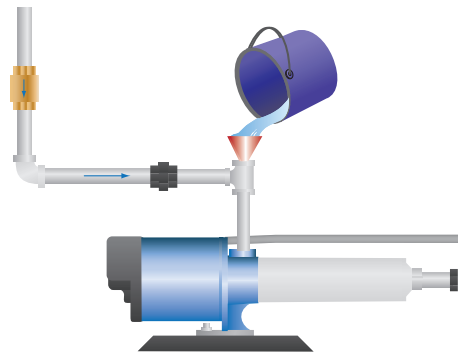
QUICK REFERENCE GUIDE.
SEE INSTRUCTION MANUAL FOR COMPLETE DETAILS.

For loose, missing or damaged parts, or if the unit does not seem to be operating properly, please call before returning unit to the local sales branch.

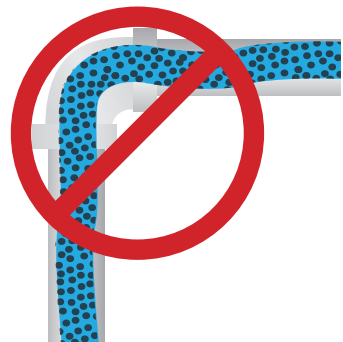
TOLL FREE HELP LINE: 1-800-742-5044
Monday thru Friday - 7:30 am to 5:00 pm E.S.T.

DON'T ...

DO NOT run pump dry or pump damage WILL occur!



Pump only clean water. **DO NOT** pump water which contains sand, mud, silt or debris.



DO NOT pump oil, petroleum products, chemicals, cleaning agents or viscous liquids.

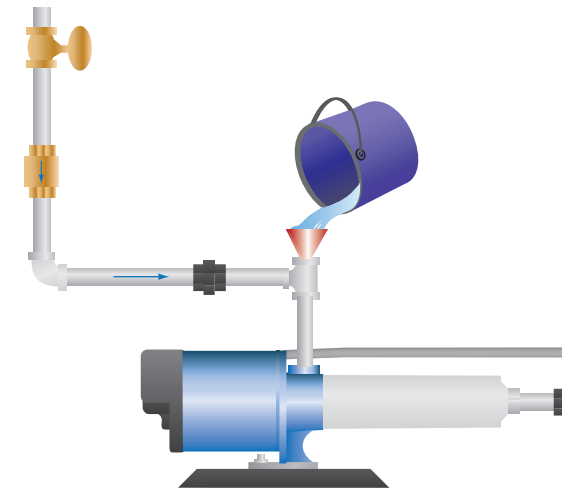


DO NOT pump less than 1.5 gallons per minute or damage will occur.

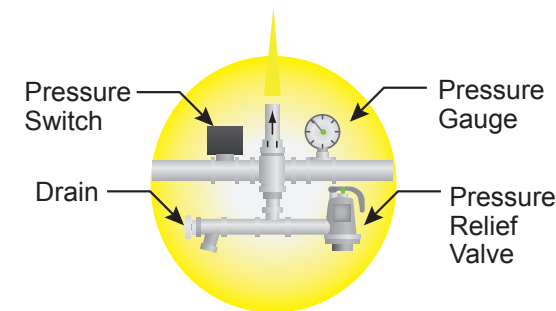
CAUTION: Improper installation may result in personal injury, property damage or pump failure. Read manual before installation or operation.

DO ...

Pump and plumbing must be full of water before startup



Install a pressure relief valve (PRV). PRV settings will vary according to the application.

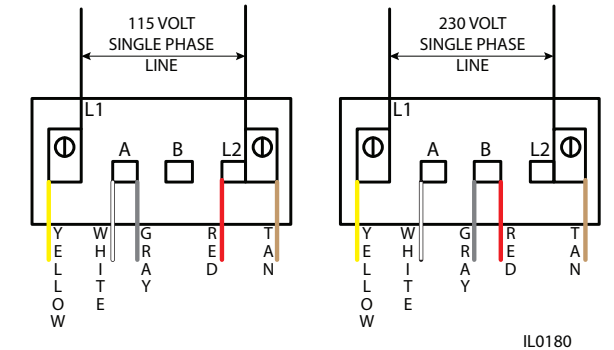


Ground motor, but **DO NOT** ground to a gas supply line.



Check voltage of power supply.
- Wire motor to correct supply voltage.
- See motor nameplate and wiring diagrams.

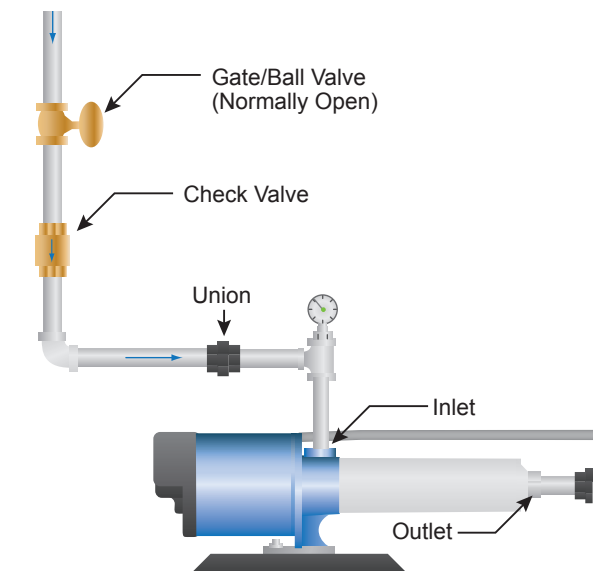
115/230 DUAL VOLTAGE MOTOR



IL0180

NOTE: This diagram does not apply to all models.

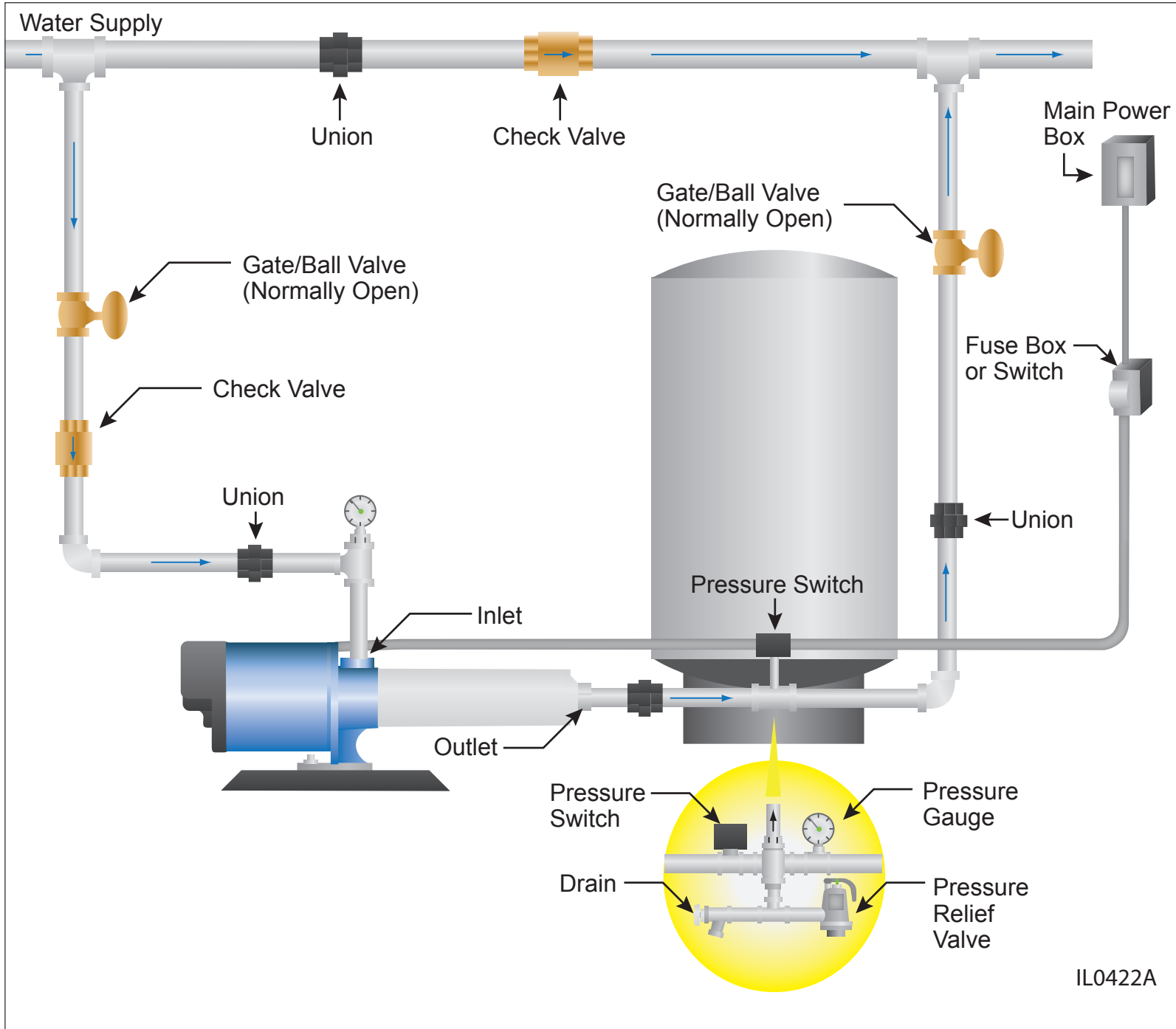
All valves and nozzles on both the inlet and outlet side of the pump must be open while the pump is in operation



See reverse side for more information.

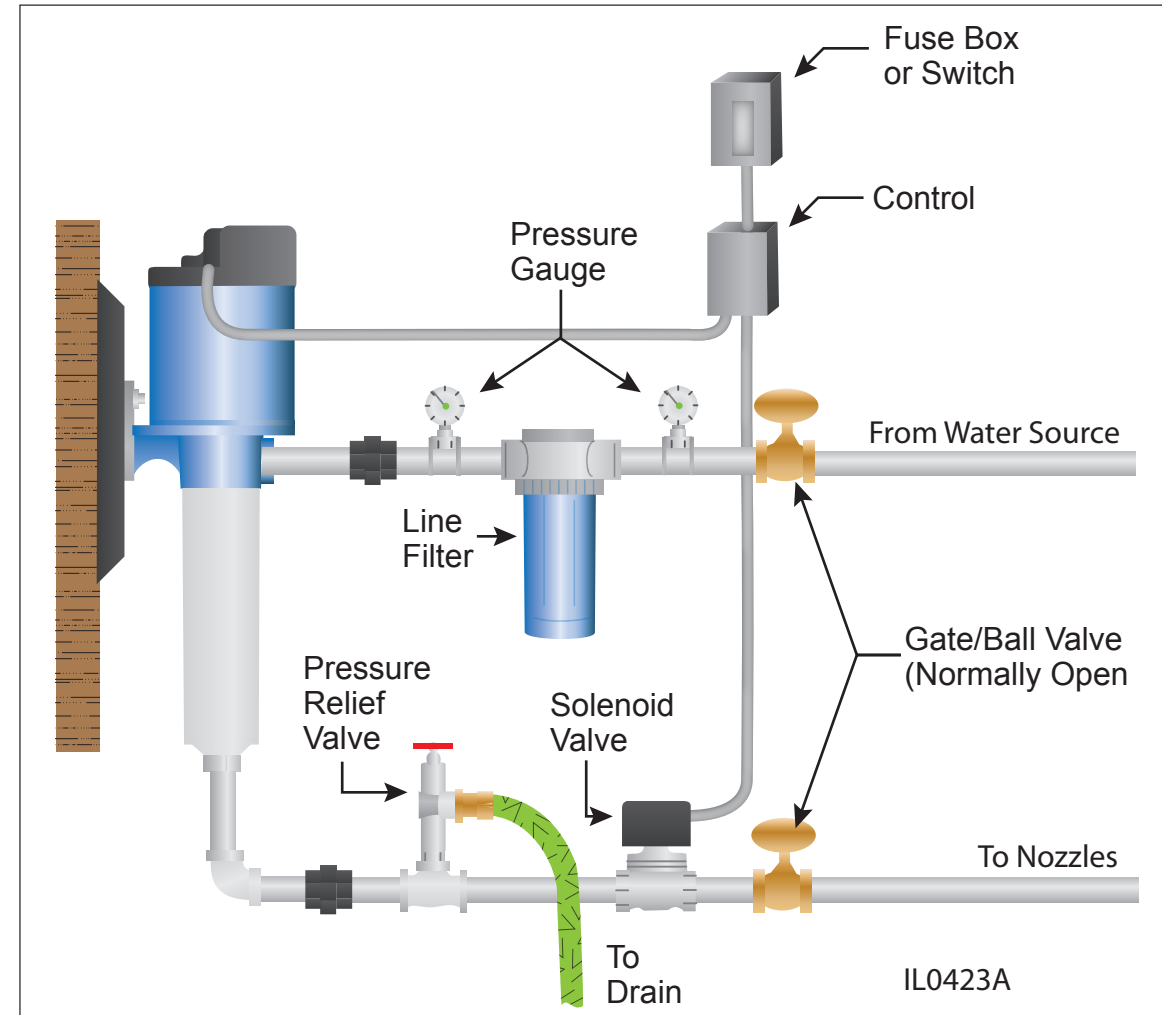
TYPICAL APPLICATIONS

Pump used to boost incoming city pressure (automatic operation).



See reverse side for more information.

Pump used to boost water pressure in mist spray applications (automatic operation).



Pump used to boost incoming pressure from a wall hydrant (manual operation).

