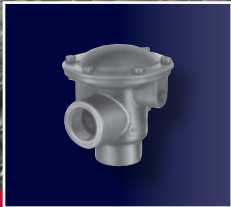
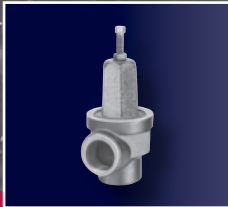


DEEP WELL JET PUMPS

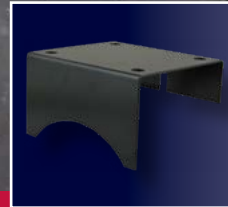
FW0185
0724
Supersedes
0920



VA SERIES - Exclusive vacuum operated pressure regulator that automatically adjusts to varying depths and discharge pressures. No manual adjustment necessary.



VS and VPH SERIES - Adjustable automatic pressure regulator provides maximum capacities and pressure at all times.



135276A Optional Pump Base For Horizontal Mounting of "VA" and "VS" Series Jet Pumps

3/4 - 2 HP Single & Multi-Stage

- Nema J single phase, 60 HZ, 3450 RPM dual voltage motor, features: quality windings, double ball bearings and overload protection with automatic restart.
- Precision molded impeller and diffuser insures perfect alignment and ultra-smooth passages for high performance and reliability.
- Large one-piece pump case design, pump can be disassembled without disturbing well or discharge pipes.
- Top located priming port and discharge prevents air lock and allows for easy priming.
- Convenient tappings for draining of pump and installation of pressure switch and pressure gauge.



VA Series with exclusive totally automatic pressure regulator



VS Series with adjustable diaphragm pressure regulator



VA, VS and VPH Series



VPH Series with adjustable diaphragm pressure regulator

VA Series Two Stage, 3/4 - 1-1/2 HP

VPH Series Single Stage, 1 HP

VS Series Two Stage 3/4 - 1-1/2 HP



VA, VS & VPH Performance Specifications

V SERIES DEEP WELL PERFORMANCE SPECIFICATIONS

MODEL NO. HP STAGES	TWO PIPE EJECTORS		SINGLE PIPE EJECTORS		NOZZLE VENTURI SELECTION		VERTICAL DISTANCE TO WATER IN FEET CAPACITY IN GPM													LB. PUMP DISCH. PRESS.				
	CAST IRON		CAST IRON	BRASS	N	V	30	40	50	60	70	80	90	100	120	140	160	180	200		220	240		
	4"		2"	2"																				
VPH10 1 HP 1 STAGE	DW40E			16	34	15.0	11.7	8.3															30	
				18	28	13.0	12.8	12.5	10.5	9.0	7.5	5.8	4.0											
				15	20						5.5	5.5	5.0	4.5	3.8	3.5	2.7							
	SP20CL† SP22CL†	SP20BL†	16	34	15.0	11.7	8.2																	
			18	28	11.7	11.2	10.0	8.3	7.0	5.5	3.8	2.2												
			17	24		10.4	9.3	8.2	7.2	6.0	5.0	4.0	3.0											
VA207P VS207P 3/4 HP 2 STAGE	DW40E			13	26	13.5	12.2	10.5	9.2														40	
				15	24			9.4	8.7	7.9	7.2	6.3	5.6											
				14	18								4.7	4.5	4.2	3.7	3.0	2.3						
	SP20CL† SP22CL†	SP20BL†	13	26	12.9	11.1	9.3	7.6																
			15	24			8.1	7.4	6.4	5.4	4.4	3.8												
			14	18								4.3	3.5	2.6										
VA210P VS210P 1 HP 2 STAGE	DW40E			13	28	16.5	14.7	12.5	10.1														50	
				15	26			12.6	11.3	10.1	8.8	7.5	6.3											
				14	20								6.2	5.5	4.8	4.2	3.5	2.8						
	SP20CL† SP22CL†	SP20BL†	14	28	15.2	12.7	10.1	8.5																
			15	26			11.1	9.5	8.2	6.8	5.4	4.4												
			14	18								4.3	4.0	3.7										
VA215P VS215P 1-1/2 HP 2 STAGE	DW40E			12	28	17.4	15.6	13.8	11.9														60	
				15	26			14.3	13.1	11.9	10.8	9.5	8.3											
				14	20								7.3	6.7	6.0	5.4	4.8	4.3	3.6	2.8				
	SP20CL† SP22CL†	SP20BL†	12	28	16.4	14.4	12.4	10.3																
			15	26			13.0	11.6	10.2	8.8	7.4	6.5												
			14	20								6.3	5.8	4.9	4.0	3.0	2.0							
14	18													3.2	2.8	2.0								

To order complete ejector package, add nozzle and venturi suffix to ejector number (Example SP20BL-1726). For ejector package less nozzle and venturi, use suffix 0000 (Example SP20BL-0000). Complete ejector package includes ejector body, nozzle and venturi plus foot valve. For appropriate well adapter see chart below. All 2" single pipe performance data is based on 1 1/4" drop pipe. If 1" drop pipe is used the performance will be less. Pressure pipe and suction pipe tappings 1 1/4" x 1" discharge tapping 1". †Not for sale in states following Proposition 65 and AB1953

VA and VS SERIES SHALLOW WELL PERFORMANCE SPECIFICATIONS

MODEL NO.	HP	SHALLOW WELL EJECTOR ASSEMBLY	SUCTION LIFT FEET	CAPACITIES - GPM AT DISCHARGE PSI							SUCTION & DISCHARGE	PRESSURE SWITCH SETTING	SHUTOFF PRESSURE PSI	SHIPPING WT	
				20	30	40	50	60	70	80					90
VA207P VS207P	3/4	SW10V-1030	5	16.0	16.0	16.0	14.5	9.5				1-1/4" X 1"	30-50	75 68 64	67
			15	13.5	13.5	13.5	12.3	7.2	2.8						
			25	7.5	7.5	7.5	7.2	2.3							
VA210P VS210P	1	SW10V-1030	5	16.7	16.7	16.7	16.7	14.3	9.0			1-1/4" X 1"	30-50	80 75 70	72
			15	13.3	13.3	13.3	13.3	11.7	5.0						
			25	7.2	7.2	7.2	7.2	6.8							
VA215P VS215P	1-1/2	SW15V-1034	5	20.7	20.7	20.7	20.7	20.7	20.3	17.0	11.0	1-1/4" X 1"	30-50	96 91 84	76
			15	17.3	17.3	17.3	17.3	17.3	17.2	15.0	4.0				
			25	9.2	9.2	9.0	9.0	9.0	9.0	6.8					

Order shallow well ejector assembly separately.

EJECTOR SPECIFICATIONS AND WELL ADAPTER SELECTION CHART

EJECTOR ORDER NO.	EJECTOR DESCRIPTION	EJECTOR DROP PIPE TAPPING	WELL SIZE / DROP PIPE	WELL ADAPTER REQUIRED	
				PACKAGE NO.	TYPE
SP20BL†	2" Brass, Leather	1-1/4" M	2" x 1-1/4"*	129720 129723	Straight Rt. Angle
SP20CL†	2" Cast Iron, Leather	1" F	2" x 1"	129719 127025	Straight Rt. Angle
SP22CL†	2" Cast Iron, Leather	1-1/4" M	2" x 1-1/4"	129720 129723	Straight Rt. Angle

*129205 1-1/4" turned coupling required. Order separately.
†Not for sale in states following Proposition 65 and AB1953

Part No.	Description
022961	Adapter to match Sta-Rite vertical jet pump footprint to F&W "VA", "VS" and "VPH" jet pumps without disturbing existing well plumbing

